

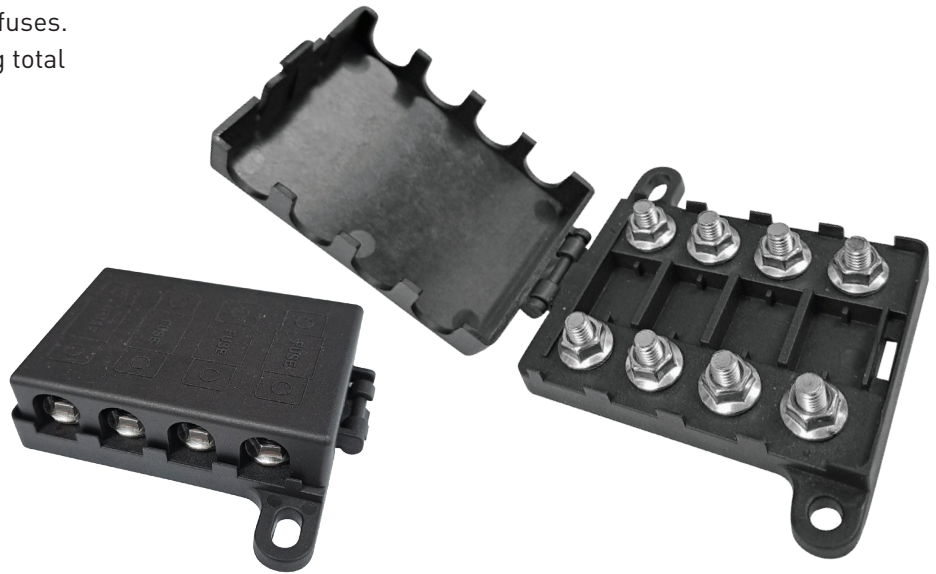


4 & 8 WAY MIDI FUSE HOLDER

The 4 Way Midi Fuse Holder Distribution Block capable of 4 circuits, providing a heavy duty quality solution to many Automotive and Industrial applications.

- Houses – 4 x AMI or MIDI bolt-in fuses.
- 220A Maximum continuous rating total
- Voltage: Up to 58VDC
- Hinged protective cover
- Stud Terminal: M6x12
- Housing Material: PA66+GF30
- Link Material: Tin Plated Copper
- Stud Material: Zinc Plated Steel
- Operating Temp: -40°C to 125°C
- Compatible Fuses: AMI Fuses

PART #: FU6077



Crafted from premium plastic, 8 Way Midi/AMI Fuse Blocks provide secure housing for your AMI / Midi fuses. Engineered with precision and using top-quality materials, these fuse holders ensure both safety and efficiency within your electrical system.

Electrical system's safety and effectiveness with 8 Way Midi/AMI Fuse Blocks. Invest in the protection and stability your AMI / Midi fuses deserve for seamless operation.

- Ultimate Protection: Safeguard your AMI / Midi fuse and shield it from harm with the sturdy fuse holder.
- AMI or Midi Compatible: Tailored to seamlessly accommodate AMI or Midi Fuses, ensuring a precise fit for optimal functionality.
- Built to Last. These fuse holders are designed to endure everyday wear and tear, delivering long-lasting performance.

PART #: FU6068

