



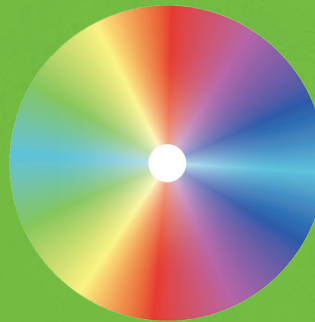
SMART 8 SWITCH PANEL



PART NUMBER: HU1300

8 WAY SWITCH WITH 64 PROGRAMMABLE RGB BACKLIT COLOURS

The HULK Professional Smart 8 Switch Panel is ideal for 4WD's, SUV's, Caravans and Trucks. This system allows you to control up to 8 different auxiliary LED light or electrical devices.



64 COLOUR WHEEL

Scan the QR code to download the App to suit either iOS or Android



IOS APP



ANDROID APP

Key features:

- 64 programmable backlit colours
- Now has an APP – Apple & Android
- 3 Programmable functions – 1 On/Off, 2 Momentary & 3 Pulsed
- 70 Decals (Icons)
- High Beam Trigger – for Driving Lights / Light Bars – to meet (ADR Approvals)



Compact in design, this 8 Way Switch Panel operates at 12V / 24V DC and comes with a full accessory kit for complete installation, including spare 60A fuses for the main power supply.

Accessories list



70 Decals



Switch assembly (IP51 rated)



Keypad (IP51 rated)



Loom



Power & earth cable



Mounting hardware



Fuses



Mounting brackets